



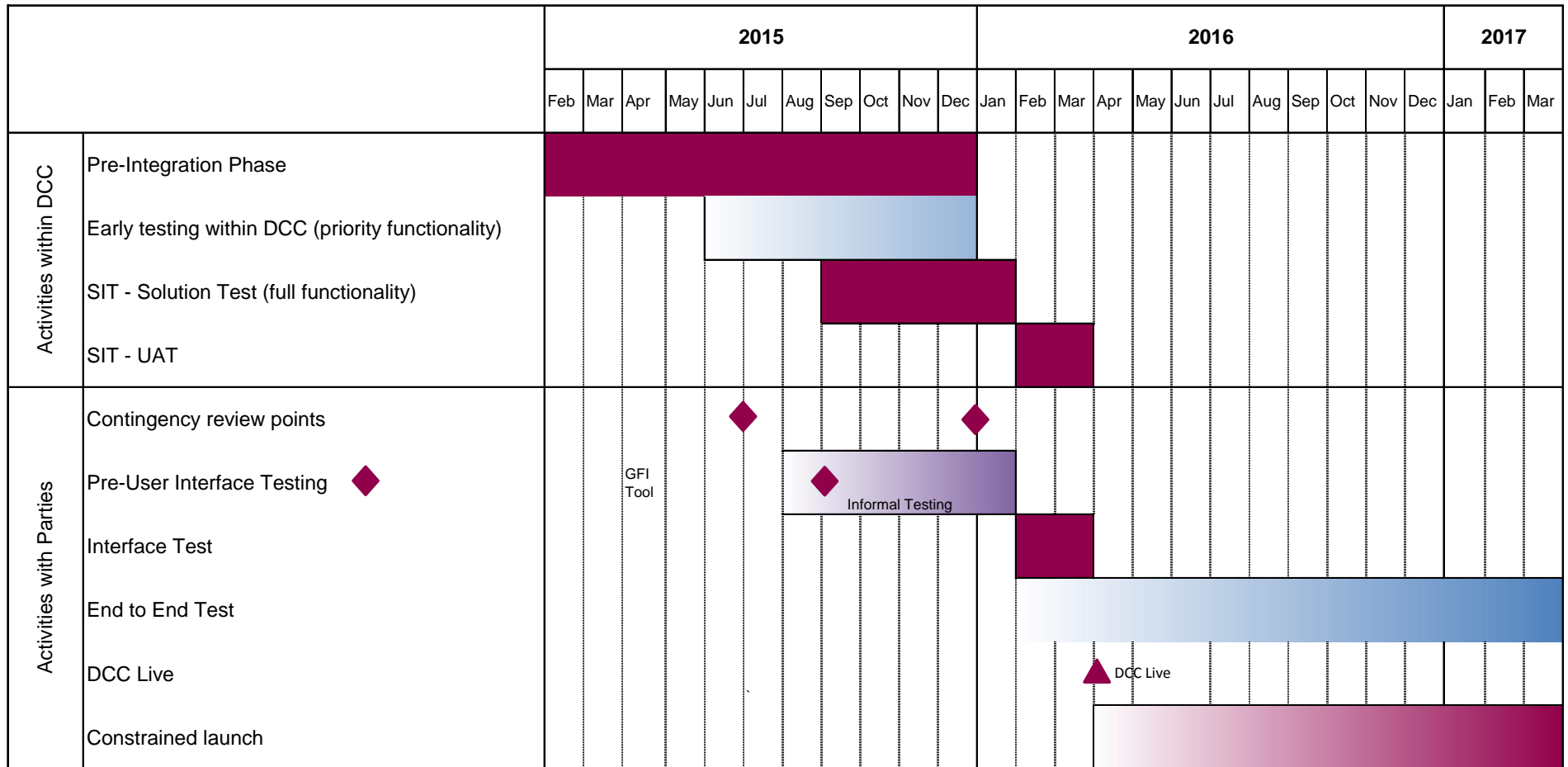
# **DCC Progress Update**

## **31<sup>st</sup> March 2015**

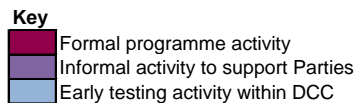
**Paul French, Industry Director, DCC**



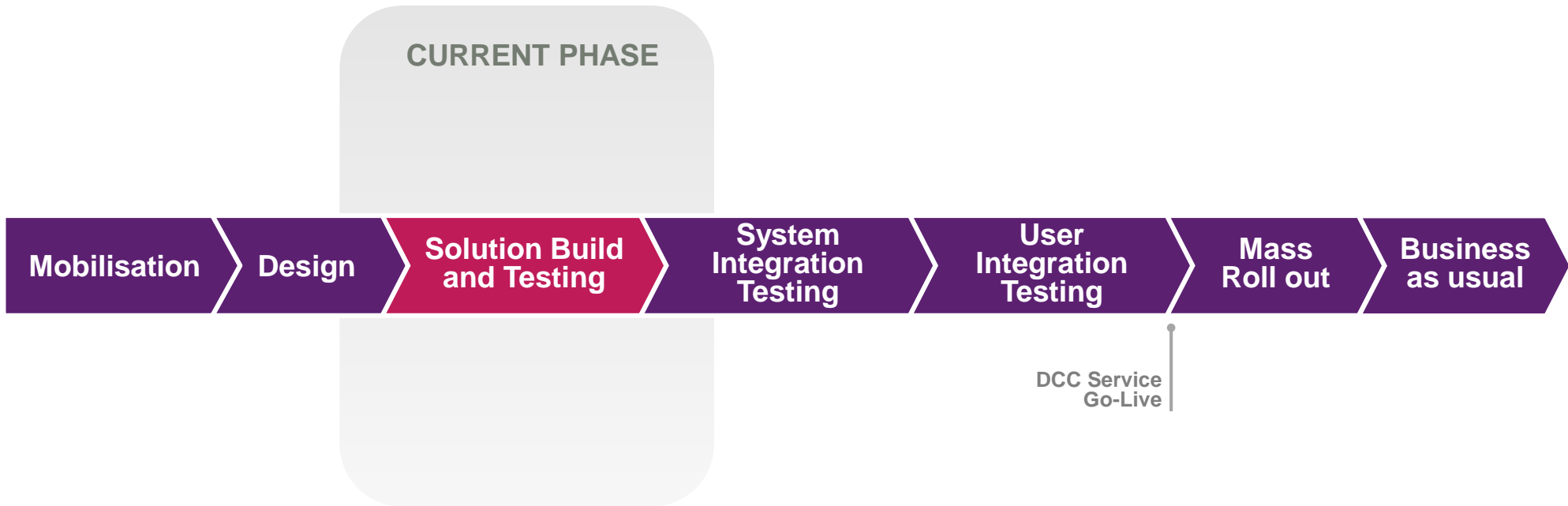
# DCC Plan (no contingency)



Shaded area under Pre-UIT is 'Informal Testing'



# Progress of Overall DCC Programme



# DCC Progress Update

## Smart DCC

- DCC owned components on track

## Testing

- Pre-UIT scope agreed with TDEG
- Industry demos of ATG complete
- First GFI testing event set for mid-April ahead of GFI release in June
- Consulting on SRT and SIT approaches

## Service Management

- Detailed Service Management system design complete; SEC Transitional Services have been prioritised; detailed procedures being developed for each service
- Service User Design Forums focusing upon business process execution via customer journeys, e.g. Change of supplier, Service User Reporting & SMKI Repository User Guidelines

# Progress & Achievements – Network Rollout



Now **40%** coverage

120

sites built and ready for service

291

sites ready to be built

788

sites commenced

across a geographically diverse landscape

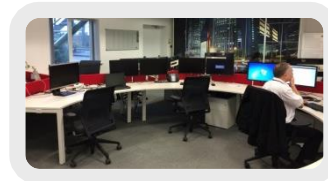


**2** data centres

Built and operational ✓

**internal & 3<sup>rd</sup> party test labs**

Built and E2E message testing in process ✓



**network management centre & service desk**

Opened in Emley Moor, Yorkshire ✓

**comms hub**

Certified and ZigBee Alliance approved ✓



# Progress & Achievements – Network Rollout



CSP CENTRAL & SOUTH



**80%**  
coverage

according to drive-by measurement (100% complete)



**Smart M2M core application**

Initial release delivered and installed in reference environments; integrated to Comms Hubs ✓

**mesh capability**

Tested successfully in the lab; now being tested in real locations ✓



**1**  
**pre-prod network environment**

Full site built and delivered; another on track to be built ✓

**All**  
**core network reference environments**

Built and in use ✓

**comms hubs**

Pre-production units available; some commands tested over live network using GBCS v0.8.1 ✓



# Progress & Achievements – Infrastructure Rollout

**CGI**

## DATA SERVICE PROVIDER

### Design & Build

- Interface specifications published
- Release 1g and SIT1 for GBCS v0.8 complete
- Release SIT1.1 (GBCS v0.8.1) in development
- Release SIT2 starts development 1<sup>st</sup> April
- Service Management System in build
- Development, System Test, Pre-Production and Sandpit Environments deployed

### Test & Assurance

- Supporting stabilisation of GBCS through proving
- System Interface Test Approach agreed

**Critical**

## PARSE & CORRELATE SOFTWARE

### Design, Build & Test

- First version (aligned to GBCS v0.8) available end April
- Next version (aligned to GBCS v0.8.1) due end November
- 'Beta' version of 0.8.1 available early (unsupported) in Aug

**BT**

## SMART METERING PKI

### Design, Build & Test

- First core release has completed testing; two further releases due by August
- SMKI Service registration opens 31st July; all SMKI test interfaces available from early November

# DCC is Preparing for New Scope

## Dual-band Communications Hubs

- DCC has commenced engagement with Arqiva and Telefonica on the Impact Assessment for the introduction of a Dual-band Communications Hub following Direction by DECC
- Progress on this work will be reported through Transitional Governance

## Enrolment and Adoption of SMETS1 meters

- On 24<sup>th</sup> March, DCC was directed to start the Initial Enrolment Project Feasibility Report (IEPFR)
- Timescales for this work have been set out in the DECC Mass Rollout Strategy
- By 31<sup>st</sup> May, DCC will seek details of SMETS1 meters from Suppliers

**Work on these two initiatives is being managed separately - so as not to distract from our core priority - DCC Live**



## Frenchie's concern's from last year (DCC Slide from CGI SIG 17th June 2014)

- **Availability of SMETS 2 equipment**
- **Building a Service Management function that fully supports Mass Rollout**
- **Testing**
- **868**
- **MDU's**
- **SMDA**
- **Co-ordination of rollout**

# How can you help ?

- SMETS2 equipment for testing
- DCC Service Users ready for SREPT, UEPT and IT
- Protocols and standards – DLMS and ZigBee
- Make use of GFI test events and Informal Testing capability

Questions ?